

seko

Tekna

Solenoid-driven dosing pumps



Your Choice,
Our Commitment

Five times the flexibility

A single outer casing contains five different models with flow rates ranging from 0.4 to 110 l/h at up to 20 bar. The single casing's fixing points remain the same, making the pump idea for the assembly of preconstructed skids.

The Tekna Series is SEKO's range of innovative wall mounted solenoid driven dosing pumps designed following decades of experience working with customers worldwide. These multifunctional solenoid-driven dosing pumps deliver outstanding precision and reliability, characteristics synonymous with the SEKO name and critical to any customer.

PVDF pump head and ceramic ball valve as standard

Using only premium materials in its manufacture, Tekna's pump head comes as standard in PVDF and with a ceramic ball valve. These features assure high performance for the chosen applications and improve the reliability of the pump, ensuring the chemical compatibility of the wetted parts.

Long-life diaphragm tested to give "five year" working life

SEKO's diaphragms are solid PTFE, offering superior life expectancy and are guaranteed by SEKO for five years to remove the need for routine replacement.

Steady dosing performance

Tekna features reduced energy consumption thanks to a stabilized multi power supply (100 - 240 Vac, 50/60 Hz).

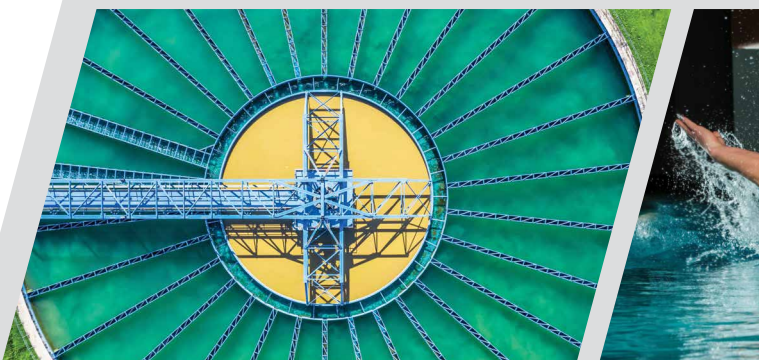


Aqua Integral
Agua para el futuro



CE  II 3GD
Ex ic nA IIB T4 Gc
Ex tc III CT120°C Dc IP65

Applications



500 Model

with flow rates from **0.4 to 1.5 l/h**
and pressures **up to 20 bar**

600 Model

with flow rates from **2.5 to 4.2 l/h**
and pressures **up to 20 bar**

800 Model

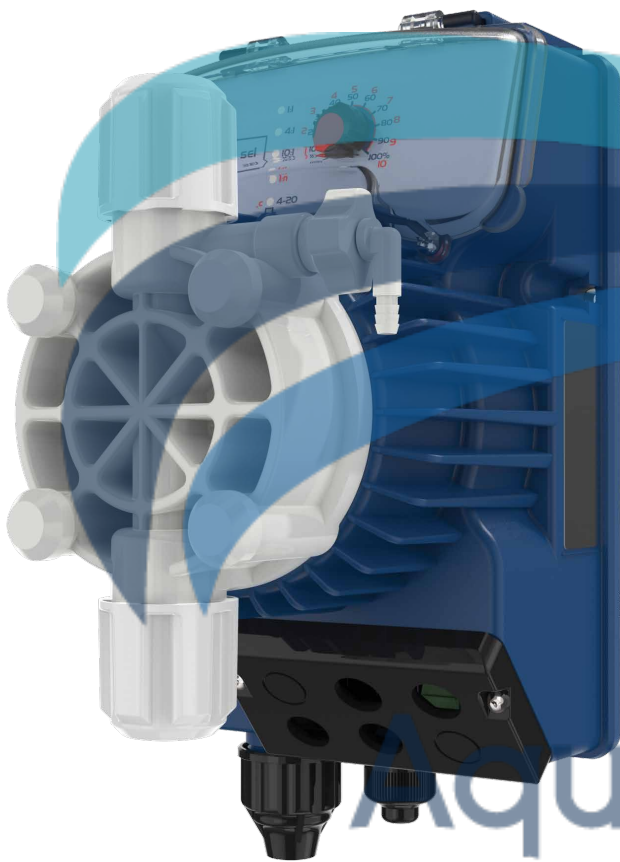
with flow rates from **7 to 18 l/h**
and pressures **up to 16 bar**

603 Model

with flow rates from **4 to 8 l/h**
and pressures **up to 12 bar**

803 Model

with flow rates from **20 to 110 l/h**
and pressures **up to 5 bar**



Intuitive programming

Tekna delivers new programming menu concept. Once a function is selected, the pump displays only the parameters that are associated with the specific function to reduce programming time. Programming menus are self explanatory and available in five languages.

ATEX version also available

Tekna is also available in ATEX-standard-compliant versions. This pump offers digital dosing with a constant or proportional flow rate that is manually adjustable from 0 - 100% and has a level control input. Tekna ATEX comes as standard with a pump head in AISI 316 stainless steel. Optionally available are heads in PVDF, outer casing made in aluminium and with a manual priming valve.

Aqua Integral®
Agua para el futuro



Analogue Versions



Tekna AKS

dosing pump with constant dosage

Analogue dosing pump with constant flow rate, with manual adjustment by control dial on the front panel.

- Two frequency ranges (0 – 20% or 0 – 100%)
- Power-ON LED indicator

Tekna AKL

dosing pump with constant dosage

Analogue dosing pump with constant flow rate, with manual adjustment by control dial on the front panel.

- Two frequency ranges (0 – 20% or 0 – 100%)
- Power-ON LED indicator and level control input



Tekna APG

dosing pump with proportional dosage

Analogue dosing pump with constant flow rate and manual adjustment; proportional flow rate according to an external analogue (4 – 20 mA) or digital pulse signal (e.g. from water meter).

- Control dial (percentage and “n” value in multiplication mode)
- Six position adjustable switch
- “Pacing” function adjustable by dip switch

Tekna ATL

dosing pump with timed dosage

Analogue dosing pump with constant flow rate, with manual adjustment and timed dosage with T ON - T OFF double regulation.

- Three control dials (flow rate % - T ON regulation - T OFF regulation)

Digital Versions



Tekna TPG

dosing pump with proportional dosage

Digital dosing pump with constant flow rate and manual adjustment; proportional flow rate according to an external analogue (4 – 20 mA) or digital pulse signal (e.g. from water meter).

- Timer function, ppm dosing, statistics, password and On/Off input (remote switch)
- Also available in ATEX version



Tekna TPR

dosing pump with proportional dosage

Digital dosing pump with pH/redox control meter built in.

- Digital interface for constant or proportional dosing, depending on the measured pH or redox value
- PT100 probe input for thermal compensation
- Repetition alarm relay
- Input On-Off for remote control
- 4 – 20 mA output for measure transmission



Tekna TMP

dosing pump with proportional dosage

Digital dosing pump with chlorine, hydrogen peroxide or peracetic acid control meter built in.

- Instrument on board set via software
- PT100 probe input for thermal compensation
- Repetition alarm relay
- Input On-Off for remote control
- 4 – 20 mA output for measure transmission



Tekna TCK

dosing pump with timed dosage

Digital dosing pump with constant flow rate and manual adjustment or timer control.

- Programmable timed relay
- Also available in ATEX version

Aqua Integral[®]
Agua para el futuro

Accessories



Threaded water meters TC1 - TH1 - TC0 Series

Single-jet water meters with pulse sender, dry dial and roller reading. Suitable for cold water up to 30°C.

- Size (4 or 1 pulse/l) from ½" (13mm) to 2" (50 mm)
- Max flow (short period) from 3 - 30 m³/h
- Min flow (accuracy ±5%) from 30 - 450 l/h

Flanged water meters FC Series

A high-capacity helical vane (Woltmann) type water meter with dry dial reading and pulse sender. Suitable for cold water up to 50°C.

- Size from 2" (DN50) to 6" (DN 150)
- Max flow (short period) from 30 - 300 m³/h
- Min flow (accuracy ±5%) from 0.55 - 3 m³/h

Mixers

Electric mixers, three-phase or single-phase, slow (200 rpm) or fast (1400 rpm) and flange attachment, for SER series tanks.

- Material: PVC - AISI 316
- Shaft length: 600, 800, 900, 1100mm
- Propeller diameter: Slow 150 - 220mm / Fast 90 mm
- Motor: 0.12 kW



Polyethylene tanks SER Series

Our tanks are designed to be integrated into dosing system assemblies using mixers and either motor-driven or solenoid dosing pumps. All are made from food-safe polyethylene and are resistant to most commonly-found chemicals.

- Storage capacity (l) : 50, 100, 250, 300, 500, 1000

Reinforcement and uncovered tanks

Tank reinforcement made of PVC (20mm thick) to be used to install mixers and motor-driven pumps or solenoid dosing pumps on SER series tanks .

Suction devices

A suction filter is provided to protect pump valves from debris or particles that could cause obstruction. Suction devices can also be supplied with integral level controls. These allow the use of alarms and protect against the system running dry.

- Easy installation; standard FPM seals (EPDM on request); made of PVC with transparent PVC suction; foot filter and non-return valve



Flow sensor

In order to assess the actual dosing phase, the flow sensor can be used to detect the pump's pulsations during the delivery phase. The sensor can also be used to determine the actual dosing flow rate. This flow sensor is fitted directly on the dosing pumps delivery valve.

- Body: PVC - PMMA - PVDF
- Seals: FPM - EPDM
- Pressure: max. 10 bar



Priming aid

Priming issues may occur with dosing pumps with low flow rates and extreme suction lifts compared to the pump capacity. This accessory can eliminate such problems.

- Body: PVC
- Seals: FPM
- Connections: IN/OUT 4/6 or 8/12 tube
- Model: 300 ml



Pump head with automatic degassing valve

Where gases are metered, this accessory allows resumption of correct dosing without any intervention from the user.

- Body: PVDF - Seals FPM - Balls Ceramic
- Flow rate reduction: max. 20%
- Connections: 4/6 tube
- Should be used combined with 603 and 800 models



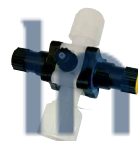
Adjustables valves HY Series

- Body: PVC
- Diaphragm: FPM (standard) or EPDM (upon request)
- Flow rate: max. 50 l/h Pressure max. 10 bar
- Connections: 1/2"Gm, 4/6 and 8/12 tube



Injection valves

- Body: PVC
- Diaphragm: FPM (standard) or EPDM (upon request)
- Flow rate: max. 50 l/h Pressure max. 10 bar
- IN connections: 1/2" Gm, 4/6 and 8/12 tube
- OUT connections: 1/2" Gm



Multifunction valve

- Body: PVDF
- Diaphragm: PTFE
- Seals: FPM - EPDM
- Backpressure: max 5 bar
- Overpressure: max 18 bar
- Connections: IN/OUT 4/6 or 8/12 tube



Fixed / Adjustable backpressure valves

- Body: PVDF
- Diaphragm / Seals: FPM - EPDM
- Backpressure: Fixed 1.5 bar Adjustable 0.5 - 5 bar
- Connections: IN 4/6 tube OUT 3/8"G - 1/2"G

Aqua Integral[®]
Aqua para el futuro

Your Choice, Our Commitment

In the modern Globalised world, being a privately owned Company has significant benefits especially for our Customers, our Partners. For over 40 years, SEKO has developed a Global organisation able to take the longer view, manage the pressure of the now, and to plan for the long term, delivering true Partnership for our Customers, with transparency and mutual respect for each other.

Whether it's for our renowned flexibility, our attention to detail, the high-quality products, or just the way we do business, we understand that it's Your Choice to do business with us. It is Our Commitment to fulfill your needs wherever you, our Customers are.



For more information about our portfolio, worldwide locations, approvals, certifications, and local representatives, please visit www.seko.com

a Integral
Agua para el futuro

SEKO reserves the right to amend and change specifications without prior notice. All pictures shown are for illustration purpose only. Actual product may vary due to product enhancement. Published data may be subject to change.

© 2019 SEKO, Layout and origin: UK, 850001 POLYSE EN V03