

# seko

## Tekba

Digital solenoid diaphragm dosing pumps with mechanical stroke length regulation



Your Choice,  
Our Commitment

# Tekba

## Digital solenoid diaphragm dosing pumps with mechanical stroke length regulation



This pump represents the best compromise between reliability, dosing precision, and ease of use. Designed on the back of the positive customer experience gained from our Tekna Series, SEKO's TEKBA offers a modern and reliable product, a reference point in the base mounted metering pump sector.

### Display and keypad

TEKBA is programmable using a keypad and the 2 line, 8 digit backlit display.

### External signal connections

All the TEKBA pumps uses convenient connectors external to the pump for signal input, in order to avoid opening the pump to making connections.

### Dosing mode

The pump head has a manual priming valve. The flow rate can be manually or automatically adjusted, the latter using input signals, across a range from 0 (pump stop) to 100% of the maximum flow rate. Additionally, it comes equipped with a low-level alarm to stop the pump.

### Materials used in the pump head

**Body** PVDF

**Ball Valves** Ceramic

**O-Ring** FPM/EPDM

**Diaphragm** PTFE

The parts that come into contact with the pumped liquid, have been chosen to be compatible with the chemicals most commonly found in use.

## Technical characteristics

Flow rates: from 4 to 110 l/h

Max Pressure: 20 bar (290 psi)

Manual priming valve

Stroke length manually adjustable

Stabilized Multi Power Supply 100 - 240 Vac, 50/60 Hz offering reduced consumption

Stroke rate: up to 300 strokes/minute

Pump head: PVDF

Diaphragm: PTFE

Enclosure: PP reinforced with fiber glass protection degree IP65

Base mounting

Installation Kit included

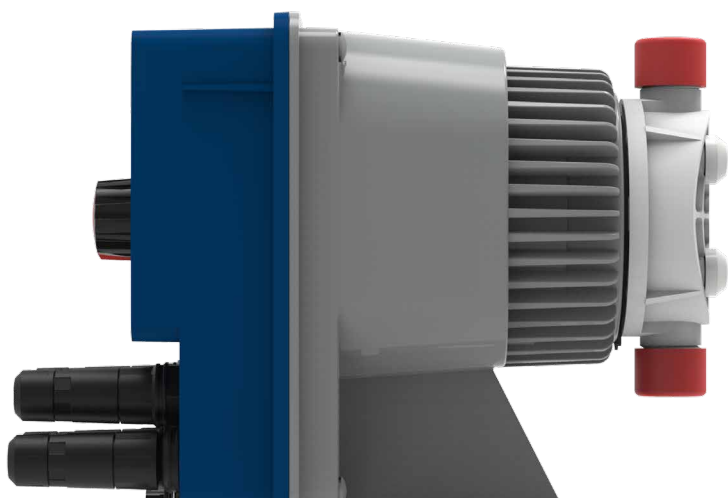
## Guaranteed 5 year diaphragm working life

- The advanced design and manufacturing process allows SEKO's diaphragm to have a unique life expectancy
- The diaphragm has been tested to offer superior results and enable SEKO to offer a 5 year guarantee <sup>®</sup>
- Made of pure solid PTFE, the diaphragm is compatible with most commonly found chemicals
- Routine diaphragm replacement is no longer a requirement, helping reduce operational costs

## Steady Dosing Performance

Tekba Series comes with a Stabilized Multi Power Supply 100÷240 Vac 50/60 Hz offering reduced energy consumption

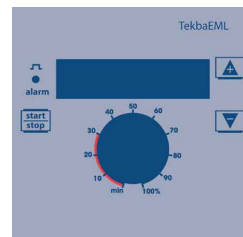
- Solenoid only draws the required power to activate the pump, based on the working conditions
- Improved pump efficiency as performance is not affected by power supply fluctuations



Aqua Integral  
Aqua para el futuro

### Tekba EML Manual adjustment with level control input

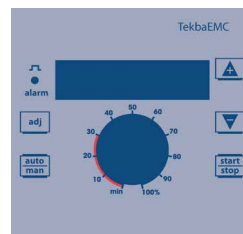
Manual adjustment via the control dial on the front panel which comes with indication of the percentage of frequency (P%) and the number of Stroke (F), with level probe input.



### Tekba EMC Automatic control (Digital pulse signal input)

Equipped with a status indicator, level control input and 2 different modes of dosage:

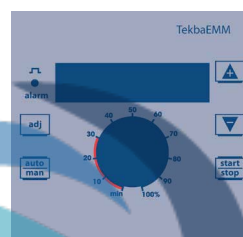
- Constant – the pump constantly doses the rate manually input on keypad
- Proportional – the pump doses proportionally based on the digital pulse signal (e.g. from water meter).



### Tekba EMM Automatic control (External analogue pulse signal)

Equipped with a status indicator, level control input, 2 different modes of dosage:

- Constant – the pump constantly doses the rate manually input on keypad
- Proportional – the pump doses proportionally based on an external analogue pulse signal (4 – 20 mA)



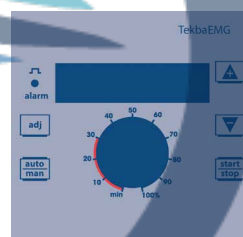
### Tekba EMG Automatic control (Analog/Digital pulse signal input)

Equipped with a status indicator, level control input and 2 different modes of dosage:

- Constant – the pump constantly doses the rate manually input on keypad
- Proportional – the pump doses proportionally based on the digital pulse signal (e.g. from water meter), or an external analogue pulse signal (4 – 20 mA).

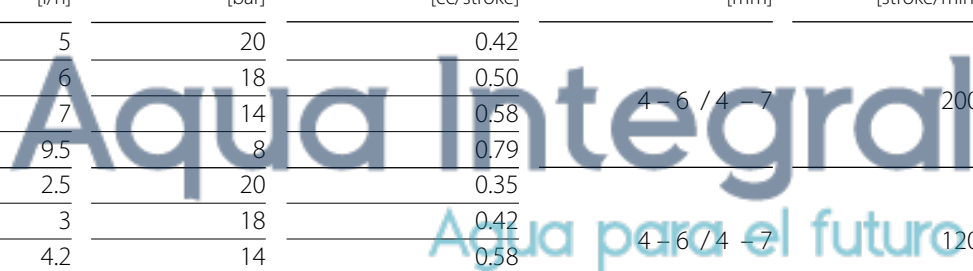
Other characteristics are:

- Timer function
- ppm proportional dosing
- Statistics
- Password
- Input On-Off (remote control)



### Technical Data

	Flow rate [l/h]	Pressure [bar]	Stroke capacity [cc/stroke]	Ø IN/OUT Conn. [mm]	Frequency max [stroke/min]
Model 600 (EMG)	5	20	0.42	4 – 6 / 4 – 7	200
	6	18	0.50		
	7	14	0.58		
Model 600 (EML, EMM, EMC)	9.5	8	0.79	4 – 6 / 4 – 7	120
	2.5	20	0.35		
	3	18	0.42		
Model 603	4.2	14	0.58	4 – 6	160
	7	8	0.97		
	4	12	0.42		
Model 800	5	10	0.52	4 – 6	300
	6	8	0.63		
	8	2	0.83		
Model 803	7	16	0.38	8 – 12	300
	10	10	0.55		
	15	5	0.83		
Model 803	18	1	1.00	8 – 12	300
	20	5	1.11		
	32	4	1.78		
	62	2	3.44		
	110	0.1	6.11		



# Your Choice, Our Commitment

In the modern Globalised world, being a privately owned Company has significant benefits especially for our Customers, our Partners. For over 40 years, SEKO has developed a Global organisation able to take the longer view, manage the pressure of the now, and to plan for the long term, delivering true Partnership for our Customers, with transparency and mutual respect for each other.

Whether it's for our reknown flexibility, our attention to detail, the high-quality products, or just the way we do business, we understand that it's Your Choice to do business with us. It is Our Commitment to fulfill your needs wherever you, our Customers are.



For more information about our portfolio, worldwide locations, approvals, certifications, and local representatives, please visit [www.seko.com](http://www.seko.com)

Integral<sup>®</sup>  
Agua para el futuro

SEKO reserves the right to amend and change specifications without prior notice. All pictures shown are for illustration purpose only. Actual product may vary due to product enhancement. Published data may be subject to change.

© 2018 SEKO, Layout and origin: UK, 850001 TEKBAG EN V03