

2018/19

Commercial

Product Range

hth

Professional Pool Treatment

Aqua Integral

Agua para el futuro

Water Care for
Swimming Pools

Welcome to **hth**[®] Calcium Hypochlorite

Lonza

The world's first
manufacturer of
calcium hypochlorite
established 1928

hth[®] manufactured by Lonza, is one of the world's leading brands of dry chlorine. Since 1928 many pool operators have been changing to **hth**[®] calcium hypochlorite (dry chlorine) simply because it is one of the safest and most economical methods of pool water treatment.

The sheer convenience of **hth**[®] calcium hypochlorite and the absence of bulk storage tanks is one reason for its rapidly growing popularity - **hth**[®] calcium hypochlorite can use fewer chemicals for pH correction and waste less water for TDS control than many other sanitisers.

hth[®] products are available in a variety of pack sizes, in a choice of granular or briquette form and as a standard or Easiflo[®] option. All **hth**[®] drums have up to date screen printed labels for conformity to EU and UN regulations.

The family of **hth**[®] Easiflo chlorine feeders are suitable for almost any size of pool, and are designed to eliminate all the problems associated with pumps, tanks and agitator based systems. Simple to use and low maintenance - with no foot valves, no dosing pumps and no injectors used within the system - both the cost and the maintenance issues related to many dosing systems become a thing of the past.

hth[®] is available in both granular and briquette form, in regular and Easiflo[®] grades, making it a safe and economical long term method of chlorination.





To back up our product, we offer a comprehensive UK support service to all our **hth**[®] public pool operators, distributors and approved installer companies.

Existing **hth**[®] users benefit from:

- **Pool water management training**
- **Chemical training**
- **Technical advice**
- **Quality literature on pool water management**

Other users benefit too:

- **Free site survey to discuss any pool problem you may be experiencing**
- **Training on safety, storage and handling of pool chemicals**
- **Free advice on how to convert your pool to **hth**[®]**

The benefits of using **hth**[®]

- **Full approval within the BPR (Biocidal Products Registration)**
- **Energy costs can be reduced**
- **Less pH correction is required**
- **Helps reduce plant corrosion**
- **Improves water quality and bather comfort**
- **Balanced water easier to achieve**
- **Helps control total dissolved solids**
- **Technical support, training and problem solving provided**

contents

4 Product Range



5 Feeders



10 Changing to hth



12 Complementary Range



14 Who we are

Lonza



15 Our Distributors

16 Customer Support



18 Residential Treatments



hth® Product Range

Easiflo® Briquette - 10, 25 & 45kg



The unique and patented “pillow shaped” briquette weighs 7gms and ensures greater efficiency with minimal wastage. The briquette form offers an enhanced COSHH rating and has 70%* available chlorine content.

Benefits

- Smaller pack sizes offer sheer convenience of manual handling for sites with limited access
- Dosed via a dedicated feeder
- Offers greater chemical efficiency

Easiflo® Granular - 25 & 40kg Granular de-dusted - 10, 25 & 40kg



We offer a regular de-dusted Calcium Hypochlorite and a patented Easiflo® Granular product which brings an anti-scale element to our range. Both have 70%* available chlorine content. The smaller packs are ideal for sites with restricted/limited access to pool plant rooms.

Benefits

- Dosed via pump and tank systems or with dedicated feeders
- Sheer convenience for manual handling

Shock - 5 & 20kg

A fast dissolving calcium hypochlorite, with 78% available chlorine content. An ideal product to shock the volume of water, safely and effectively.



Benefits

- Long shelf life - ideal for service engineers
- Fast dissolving granules
- Very easy to handle and use
- Clears Algae and burns off inorganic Chloramines
- Cleans surface draw offs and skimmers
- Cleans the filter
- Has minimum effect on water balance including TDS and pH
- Does not add to cyanuric acid levels

Aqua Integral®
Agua para el futuro

CLP Regulation Information - hth Calcium Hypochlorite

Ox. Sol. 2	H272 May intensify fire; oxidiser.
Skin Corr. 1B	H314 Causes severe skin burns and eye damage.
Aquatic Acute 1	H400 Very toxic to aquatic life.
Acute Tox. 4	H302 Harmful if swallowed.
EUH031	Contact with acids liberates toxic gas
EUH206	Warning! Do not use together with other products. May release dangerous gases (chlorine).

*Test data taken from retained samples at our Charleston factory.

hth® Feeder Technology

Easiflo® Feeders - 1 & 3 and F20 & F50

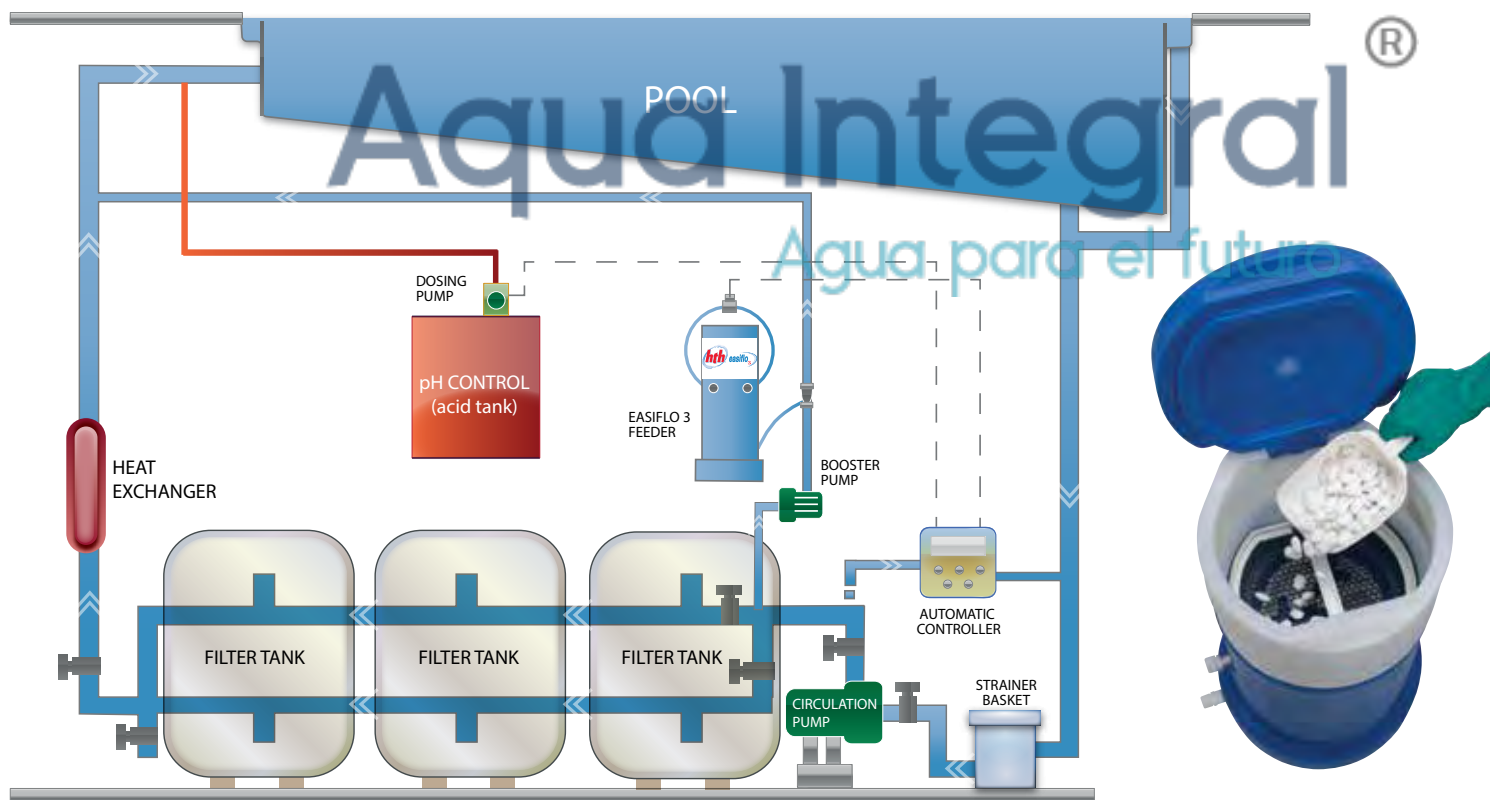
All feeders utilise **hth®** Easiflo® briquettes and can be used in conjunction with any Auto Controller.



Selecting the correct Easiflo® feeder you require will depend on the bather load of the pool - please ask our Technical Services Team for advice.

How it works

The Easiflo® Feeder doses a solution of **hth®** calcium hypochlorite into a pool circulation system by the use of spray and venturi technology. The briquettes sit on a grid and a solenoid is energised via a signal from an automated control unit. This allows a single jet (Easiflo® 1), two jets (Easiflo® F20), 3 jets (Easiflo® 3) or 4 jets (Easiflo® F50) of water to be sprayed underneath the grid, washing the briquettes and forming a calcium hypochlorite solution in the bottom of the feeder. The solution is then evacuated into the pool circulation pipework via the venturi (which can be linked to its own booster pump system - offering consistent inlet pressures to wash the briquettes as well as consistent suction strength to apply the solution). The feeder is non-pressurised and offers a safer, less time consuming and easier form of chlorine application.



Easiflo® 1

Average pool capacity: 50 - 300m³



Benefits

- Utilises the safest format of chemical - Briquette
- Simple and easy installation
- Low maintenance
- On demand chlorine generation
- Space saving due to the small footprint
- Easy clean smooth plastic and sloping tank

Operational Requirements

Inlet pressure (Range) 2-20 psi
 Ideal Inlet Pressure 12 psi
 Outlet vacuum 3 - 29" Hg
 Operating Temperature 4 - 55°C

Operational Characteristics

Inlet flow 0.75lt - 4lt min
 Outlet flow (Min) 0.92lt/min

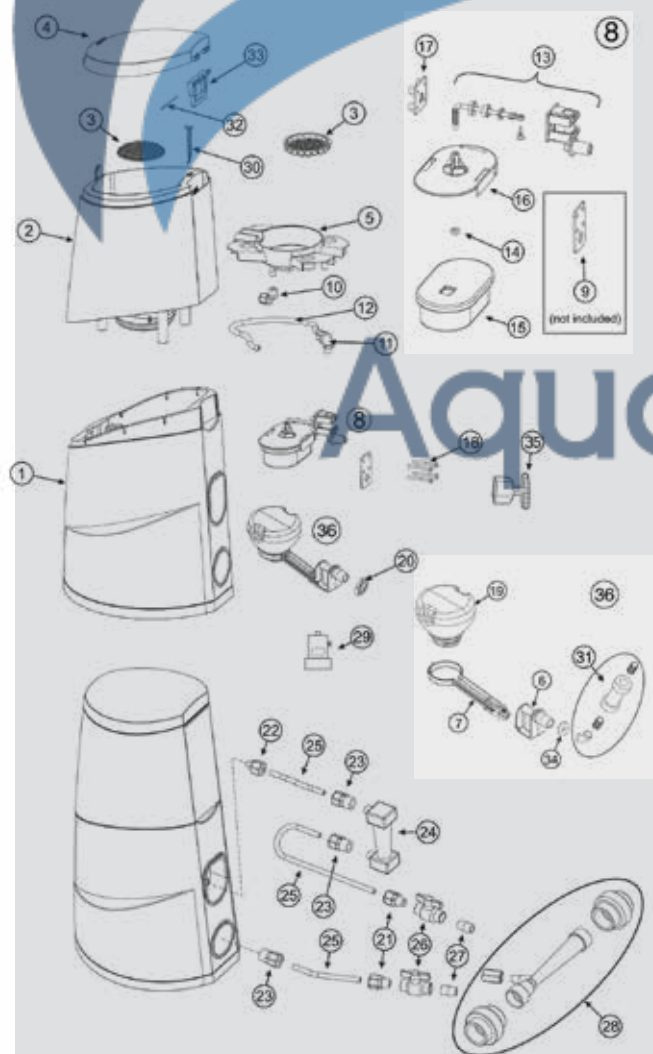
Dimensions

Tubing 1/2" O.D. Polyethylene
 Feeder dimensions (w x d) 330mm x 381mm
 Feeder height 787.5mm
 Feeder weight (full) 19kg
 Feeder weight (empty) 7.7kg
 Hopper Capacity:
 12.7kg **hth®** Easiflo® Briquettes

Feed Rate

hth® Easiflo® Briquettes 0.22 - 12.7kg of Available Chlorine per day

Detail and Part Numbers



No.	Part	Description
1	74066	E1 Base
2	77334	E1 Hopper
3	77332	E1 Grid
4	79879	E1 Lid
5	77331	E1 Dissolving Cup with Nozzles Assembly
6	79806	Discharge Valve Body
7	79217	Discharge Valve Arm
8	71496	Emergency Shut Off Valve Assembly - part 71910 not included
9	71910	Rubber Gasket for Emergency Shut Off Valve
10	74059	Parker Fitting W6FE4
11	71619	Elbow (W6ME6) 3/8" For Feeders 30991 & P3, PI
12	71618	3/8" PE Tubing (2 ft)
13	71535	Emergency Shut Off Valve with Arm Only
14	71538	Emergency Shut Off Float Plate PVC Nut/Discharge Arm Nut
15	71540	Emergency Shut Off Overflow Float
16	71539	Emergency Shut Off Float Plate
17	71536	Emergency Shut Off Mounting Plate
18	71537	Emergency Shut Off Mounting PVC Screws (1/4 x 20 x 2 1/4)
19	79808	Discharge Valve Float
20	71583	Discharge Valve Locknut
21	71890	Parker Fitting, W8MC8
22	71614	Tube Connector (P8MC4) (also for solenoid)
23	71588	(5008) 112" x 112" Female Connector (P8FC8)
24	74060	Flow Indicator - E1
25	71626	20' 112" O.O. PE Tubing
26	71621/27	Inlet /Outlet
27	71611	1/2" X close PVC Nipple
28	71974	White Venturi
29	77020	Solenoid E1-E3
30	-	Grid Hook
31	79218	Non-Return Valve
32	77333	Hinge Pin
33	77336	Hinge
34	71576	Discharge Valve Gasket
35	352481	Discharge Valve Lock Nut Spanner
36	79804	Discharge Valve Assembly

Easiflo® 3

Average pool capacity: 300 - 1000m³



Benefits

- Utilises the safest format of chemical - Briquette
- Simple and easy installation
- Low maintenance
- On demand chlorine generation
- Constant internal wash down system
- Removable briquette tray for cleaning

Operational Requirements

Inlet pressure (Range) 17-45 psi
 Ideal Inlet Pressure 30 psi
 Outlet vacuum 5-29" Hg.
 Operating Temperature 4 - 55°C

Operational Characteristics

Inlet flow 6.0lts/ min
 Outlet flow (Min) 6.4lts/min

Dimensions

Tubing 1/2" O.D. Polyethylene
 Feeder diameter 482.5mm
 Feeder height 838mm
 Feeder weight (full) 57 kg
 Feeder weight (empty) 12.5 kg
 Hopper Capacity:
 28kg **hth**® Easiflo® Briquettes

Feed Rate

hth® Easiflo® Briquettes 0.5 - 54kg of Available Chlorine per day

Detail and Part Numbers



No.	Part	Description
1	71608	Hinge Rod W/Set Screw for E3 Hopper
2	71607	Lid for E3
3	71609	Briquette Screen Assembly for E3
4	71606	Hopper without Lid for E3
5	71619	Elbow (P6ME6) 3/8" For Feeders 30991 & E3
6	71617	Spray Nozzle for E3
7	79047	Manifold for E3
8	71620	Deflection Plate Assembly
9	71610	Base without assembled parts
10	79806	Discharge Valve Body
11	71536	Emergency Shut Off Mounting Plate
12	71535	Emergency Shut Off Valve with Arm Only
13	71537	Emergency Shut Off Mounting PVC Screws (1/4 x 20 x 2 1/4)
14	71539	Emergency Shut Off Float Plate
15	71538	Emergency Shut Off Float Plate PVC Nut/Discharge Arm Nut
16	71540	Emergency Shut Off Overflow Float
17	71496	Emergency Shut Off Valve Assembly - Part 71910 Not Included
18	71583	Discharge Valve Locknut
19	71613	(4026) O-Ring #115 - Used in Plug
20	71612	Plug for Feeder Body for E3
21	71558	3/8" O.D. Polyethylene Tubing - 20'
22	79217	Discharge Valve Arm
23	79808	Discharge Valve Float
24	71614	Tube Connector (P8MC4) for E3
25	71621	1/2" Ball Valve MM (Inlet)
26	71626	20' 1/2" O.D. PE Tubing
27	71627	1/2" Ball Valve MF (Outlet)
28	71588	(5008) 1/2" X 1/2" Female Connector (P8FC8)
29	71576	Discharge Valve Gasket
30	71910	Rubber Gasket for Emergency Shut Off Valve (not shown)
31	72863	Discharge Valve Enhancement Adaptor (not shown)
32	75860	8 - 32 x 5/8" PVC Screws
33	72865	Custom Washer for Discharge Valve Adapter
34	71373	Cleaning pan for Briquette Grid (Easiflo 3) (not shown)
35	71598	(8001) Scoops (Easiflo Accessory) (not shown)
36	71622	Operators Manual for E3 System
37	72864	E3 Enhancement Kit
38	71582	Parker fitting W6ME4
39	71968	1/4" Threaded PVC Tee with Nipple
40	72862	Spray Nozzle (Lechler 632.364.5E,BC)
41	71572	(3045) Reducing Bushing (3/8"x1/4")
42	71900	(4014) Parker Fitting P6MC4
43	72861	Spray Nozzle (Lechler 632.564.5E,BC)
44	71563	(3002) PVC Elbow For Feeders 30025, 30991 and P3 Enhancement Kit
45	71574	(3103) 3/8" P.E. Tubing E-64-0500 (13.5")
46	79804	Discharge Valve Assembly (complete)
48	77020	Solenoid Valve
49	79218	Non Return Valve

hth® New feeding system

More informations and spare parts:
Easiflo® 20 and 50

**NEXT
GENERATION OF
hth® FEEDING
SYSTEM**



Benefits

- Utilises the safest form of **hth®** - Briquette
- Simple and easy installation
- Easy loading
- Low maintenance
- On demand chlorine generation for consistent chlorine solution strengths
- Uniform dissolution, due to the Spray Technology
- Space saving due to the small footprint
- Easy clean smooth plastic
- Made in France
- New Design
- Low initial investment
- Improved elimination of insolubles: Enhanced rinsing system to reduce waste
- Lid-Safety: Lid safety switch will stop feeder operation when opened
- Remove safety against overflow:
 - Emergency shut off valve, ensures overflow projection
- Technical Support
- Increased flexibility with feeder capacity

Easiflo innovation

To meet individual pool challenges, **hth®** offers a range of two new **hth®** Easiflo feeders: Easiflo 20 and Easiflo 50.

To precisely define the best feeder for your swimming pool, we recommend you to contact your Lonza sales representative. This sales representative will be able to tell you the feeder that fits your pool, according to its size, the required chlorine content, visitors number and the technical characteristics of your premises.

Easiflo feeders

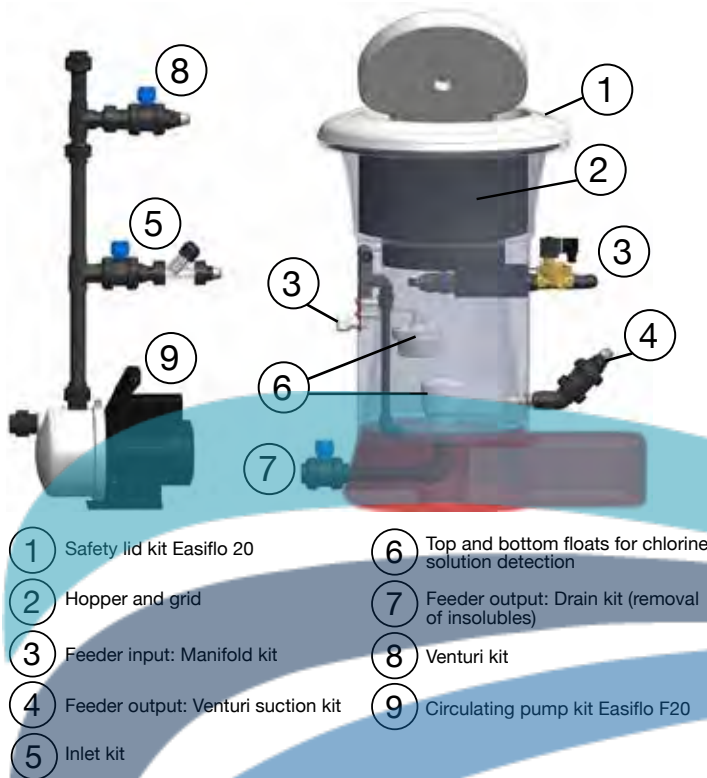
hth® Easiflo feeders are divided into 3 elements:

- A briquette tank.
- Spray technology (to spray the water on the briquettes).
- A reservoir of chlorine solution, with rinsing system to avoid deposits.



Easiflo® 20

Average pool capacity: 50 - 600m³



Operational Requirements

Total Alkalinity 60 - 80 mg/l

Water Hardness < 200 mg/l

Operational Characteristics

Briquette sprays 0.5lt - 1.20lt min

Outlet flow (Min) 3.1lt/min

Dimensions

Tubing 1/2" O.D. Polyethylene

Feeder dimensions (w x d) 723mm x 555mm

Feeder height (lid lose/open) 860mm / 1173mm

Feeder weight (full) 50kg

Feeder weight (empty) 15kg

Hopper Capacity:

20kg **hth®** Easiflo® Briquettes

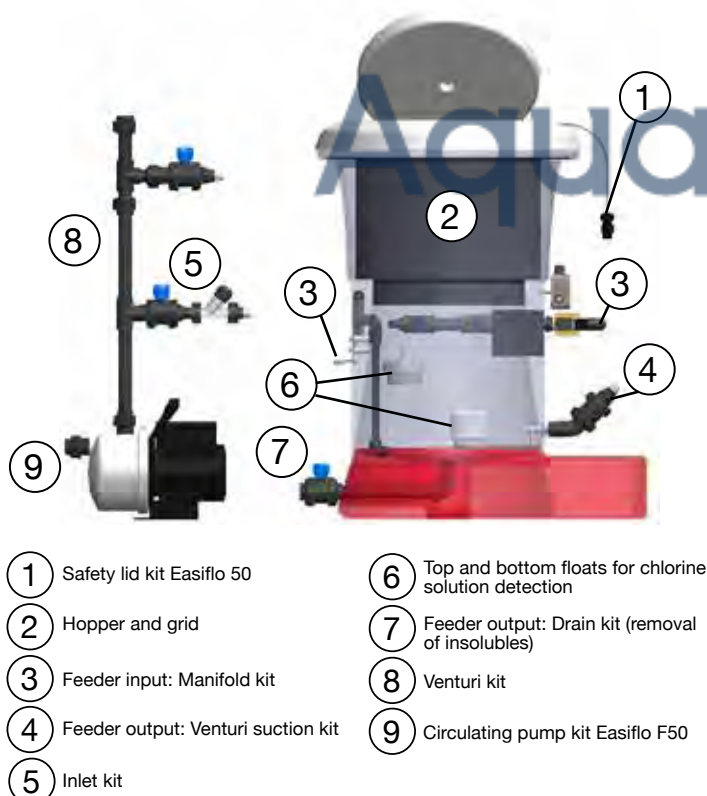
Feed Rate

hth® Easiflo® Briquettes 42kg of Maximum Available Chlorine per day



Easiflo® 50

Average pool capacity: 600 - 1200m³



Operational Requirements

Total Alkalinity 60 - 80 mg/l

Water Hardness < 200 mg/l

Operational Characteristics

Base circulation spray 1.20lt - 3.01lt min

Outlet flow (Min) 3.2lt/min

Dimensions

Tubing 1/2" O.D. Polyethylene

Feeder dimensions (w x d) 850mm x 660mm

Feeder height (lid lose/open) 982mm / 1335mm

Feeder weight (full) 85kg

Feeder weight (empty) 20.5kg

Hopper Capacity:

50kg **hth®** Easiflo® Briquettes

Feed Rate

hth® Easiflo® Briquettes 85kg of Maximum Available Chlorine per day

Changing to **hth**[®] is easy

Many pools in both soft and hard water areas, have successfully changed to **hth**[®] for the unique benefits and savings that it brings. Usually a conversion can be achieved for less than the cost of a new bulk storage hypochlorite tank and wherever possible, existing equipment is utilised.

With a range of **hth**[®] product pack sizes to suit all pools and any plant room situation, hth is widely used in the smallest spa pool and water play feature right up to 50m pools and large lidos.

hth[®] Dosing - Pump and Tank system

We know the key to successful trouble free dosing - there is no benefit in buying pumps and equipment that actually make the job of dosing more difficult. You can be assured the equipment we specify is right for your site's requirements.

Site surveys by Lonza personnel identify existing equipment that can be utilised to dose **hth**[®]. Wherever possible existing pumps are redeployed, for example, using the main pool dosing pump on a small pool if appropriate.

However the tank itself is usually increased in size, resulting in less frequent recharging. If briquettes are to be used, a suspension net is required which Lonza can provide free of charge, see Fig 2.

Pools remain fully operational during the installation of any type of preferred dosing system.

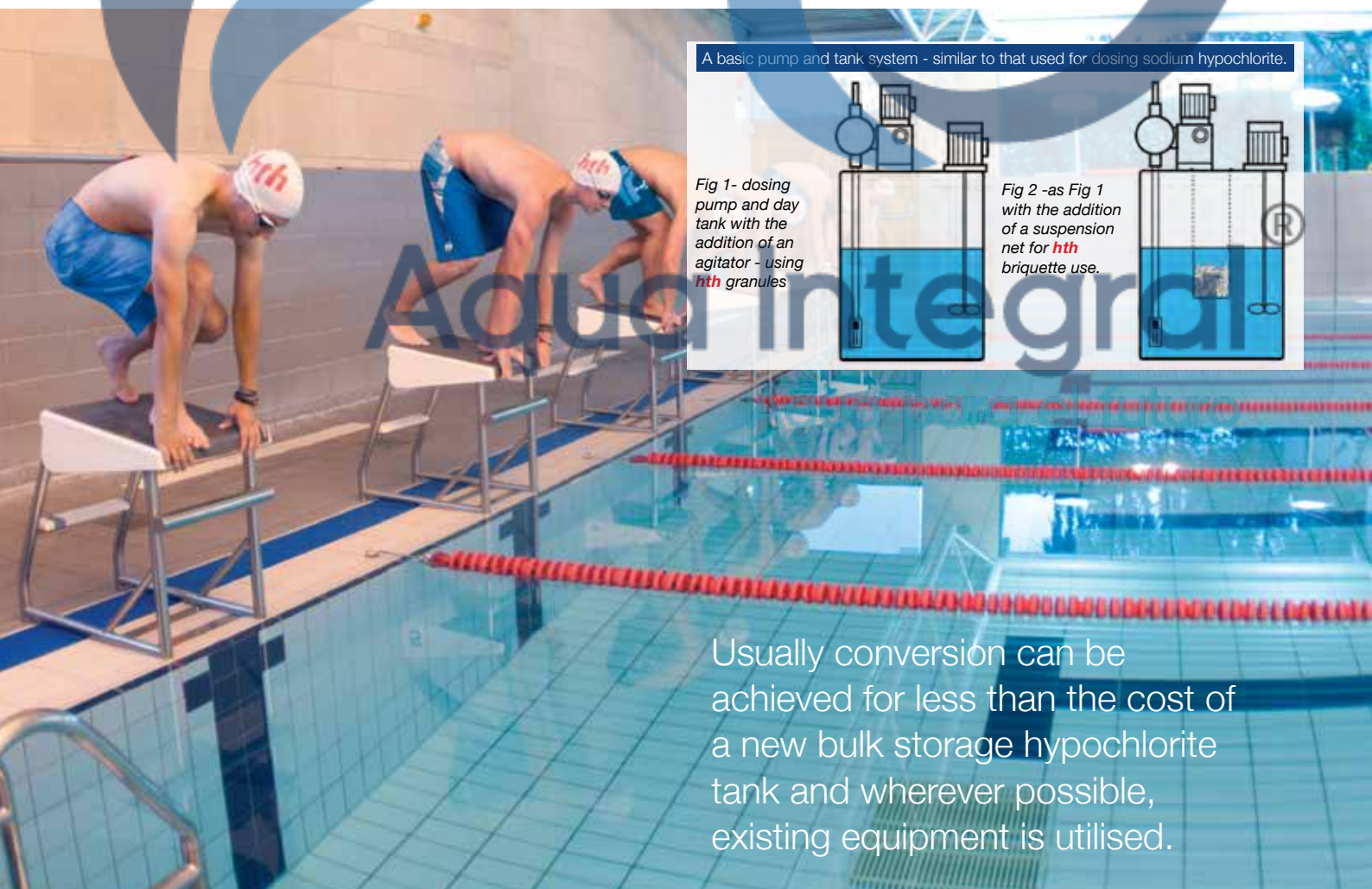
hth[®] Dosing - Dedicated Feeders

Dedicated feeders are ideal for sites which require minimal operator involvement, as they offer ultimate safety and convenient dosing.

There are several feeders which are capable of dosing two pools independently - again bringing down the cost of conversion.

Lonza Technical Services offer a free and no obligation site survey where we will identify your specific requirements and advise on the feeders most appropriate for your site from the Lonza Easiflo[®] feeder range

See pages 6 & 7 for the range of feeders from Lonza Water Treatment.



A basic pump and tank system - similar to that used for dosing sodium hypochlorite.

Fig 1 - dosing pump and day tank with the addition of an agitator - using **hth** granules

Fig 2 - as Fig 1 with the addition of a suspension net for **hth** briquette use.

Usually conversion can be achieved for less than the cost of a new bulk storage hypochlorite tank and wherever possible, existing equipment is utilised.



Corrosion

Total Dissolved Solids (TDS) - salt residues from various pool chemicals, are the chief culprit of corrosion in the pool. This is caused when two dissimilar metals are in close proximity, ie. copper or bronze and iron (which can be found in calorifiers and pumps). Pool water with high TDS levels, acts as an electrolyte, allowing the ions from the anode to migrate to the cathode and a galvanic reaction takes place.

hth® contains relatively few salts, reducing TDS levels and so making the water less conductive. **hth®** also contains added calcium so provides a protective calcium layer when the water is in balance (according to the Langelier Saturation Index). This laying down of the calcium layer stops the electrolysis from taking place.

Grout Loss and Energy Costs

Water has a natural hunger for calcium until it reaches around 250ppm* and as a result will leach calcium from grout and cement below the tiles. To prevent this, many operators add calcium separately in the form of calcium chloride flake. Massive amounts are required to keep levels up, but this also dramatically increases TDS. This, in turn can only be reduced by water dilution, which reduces the calcium hardness so that more calcium chloride flake needs to be added - creating an unbreakable cycle.

As **hth®** contains calcium, so is added during the chlorination process, and since most **hth®** pools happily operate above 250ppm of hardness, the grout is left untouched.

hth® contains relatively less salts than most alternative sanitisers - reducing the need, time and energy of costly dilution.

Reduced Chemicals

hth® has a ph of 11, compared for example, to liquid bleach which has an average of 12.5. Pool water treated with **hth®** therefore requires little pH correction.

Easy, Safe and Convenient to Use

The Health and Safety Executive calls for a product to be used in its safest possible form. It states liquids are safer than gases, granules are safer than liquids and briquettes are safer than granules.

hth® is available in both granular and briquette form, in regular and Easiflo grades, making it one of the safest and most economical long term methods of pool chlorination.

*from research undertaken within UK swimming pools.

hth® - the answer to your pool problems

Ideal for maintaining balanced water conditions and increasing the life expectancy of pool plant and grout, **hth®** can also save up to 50% on pH correction and water dilution.

Grout loss and corrosion problems associated with pools using sodium hypochlorite.



Prevention/Solutions

Even when pool water is disinfected and balanced it is still affected by bather load and other external factors. These can cause the water to become cloudy or turn green if left.

The filter is one of the hardest places to clean without physical removal of the sand.

hth® has specifically formulated a liquid that is ideal for filter treatment and thorough cleaning of tired or dirty sand. **hth® FILTERWASH** is a perfect solution to ensure the filter remains clean and clear of grease and scale deposits.

The **hth® FILTERWASH** formula is effective for the removal of scale and other residues that can clog up sand. This product can extend the life of the filter sand and prevent extra costs associated with its early replacement.

The purple dye is added to ensure the filter is backwashed thoroughly before restarting.

When backwashing the purple colour can be seen leaving the filter. Once the dye has been removed, the filter is ready for normal pool operation.

Up to 12 hours contact time is recommended.

Cleaning products

Scale from pool water evaporation is a common occurrence but can be unsightly and difficult to remove if left to build up. This scale can form anywhere the pool water touches including the cover, channel grating, ingress and egress routes.

hth® Banisol Extra® has been specially developed to help remove scale, rust stains and mineral deposits from pool surfaces, surrounds, showers and toilets. The product is equally effective in tiled and lined pools.



Aqua Integral®

Agua para el futuro

hth® FILTERWASH

CLEANS AND DESCALES SAND AND CARTRIDGE FILTERS

- High concentration of active materials
- Coloured purple for convenience



Application

Filter cleaner for maintenance periods.

- Sand Filter : elimination of scale, rust, and mineral deposits which impede filtration.
- Can also be used for Cartridge filters and DE filters.

Characteristics

- Technical cleaner which was designed in close collaboration with filter manufacturers and equipment suppliers.
- Concentrated product.
- Very effective against limescale deposits.
- Excellent degreaser.
- Purple dye ensures full removal of product before commencing normal filtration.
- Long shelf life

Usage Instruction

SAND FILTER

- 1 to 2 liters for a filter less than 50cm in diameter.
- 2 to 5 liters for a filter diameter 50cm to 1m.
- 5 to 20 liters for a filter diameter of 1m to 1,50m.
- 40 liters for a filter diameter of 1,5m to 2m and more.
- Backwash the filter and rinse.
- Introduce the product upstream of the filter (skimmer, duct or prefilter) and activate, for a few seconds, the filtration in the rinsing-sewer position to disperse the product in the filter.

Warning ! Although more restrictive, the best method is to pour the product directly into the open filter, on the sand, after taking the precaution of dropping the water

level to the sand level inside the filter.

- Leaving it to act for at least half a day, for example overnight.
- Backwash and rinse the filter thoroughly until the coloring of the control indicator disappears (when it is possible).

DIATOMITE FILTER or CARTRIDGE FILTER

- In a container immerse the filter cartridges and supports in a solution of diluted **hth® Filterwash** at a rate of 1 liter per 10 liters of water.
- Allow to act for a minimum of 2 hours, then brush and rinse the items under running water.

Composition

Contains hydrochloric acid (10-25%, orthophosphoric acid (10-25%) and formic acid (<5%)

Safety



C -Corrosive

Warning ! This product presents health and environmental risks. Please, refer to the Safety Data Sheet (available from your supplier) and follow the use, risk and safety phrases stated on the packaging.

Part number	L	Packing	Pallet
00218943	20	1	28

hth® BANISOL EXTRA® - Descaling agent

ULTRA CONCENTRATED DESCALER

- Removes deposits of scale and rust
- High concentration of active materials



Application

Removal of scale, rust and mineral deposits as part of regular cleaning or periodic deep cleaning in and around the pool.

Can be used to clean calcium carbonate deposits in chlorine feeder units.

Characteristics

- Technical cleaner designed in collaboration with waterproof coating, tile and liner manufacturers.
- Very high content of active ingredients.
- Powerful cleaning agent with effective active ingredient.
- Long shelf life.

Usage Instruction

- Before using prevent the product entering the pool water by either lowering the pool level or making a barrier.
- Rinse the area to be descaled.
- For liner coatings and reinforced PVC please use diluted.

- Apply **hth® Banisol Extra®** pure or diluted to a ratio of 1 liter in 10 liters of water, depending on the resistance of the deposit to be removed.

MACHINE APPLICATION : 10% or 1 liter in 10 liters of water.

- Allow contact time of 5 to 10 minutes.
- Brush the surfaces to be cleaned if necessary.
- Flush with plenty of water.
- For stubborn stains, repeat the operation.

Note 1 : when diluting, always pour the product into the water, never the opposite.

Note 2 : for brushing operation, avoid the use of synthetic bristle brushes.

Note 3 : for liners coatings, reinforced PVC, use diluted product and test in a small area first.

Composition

Contains hydrochloric acid (10-25%, orthophosphoric acid (10-25%) and formic acid (<5%)

Safety



C -Corrosive

Warning ! This product presents health and environmental risks. Please, refer to the Safety Data Sheet (available from your supplier) and follow the use, risk and safety phrases indicated on the packaging.

Part number	L	Packing	Pallet
00218936	10	1	40
00218938	20	1	28

Who we are

Lonza

Lonza is one of the world's leading suppliers to the pharmaceutical, healthcare and life science industries. Products and services span its customers' needs from research to final product manufacture. Our European water treatment operation is a leader in the treatment of swimming pool water for all types of facilities from communal and private pools to spas.

hth

Through our offices in the UK, France and Germany we co-ordinate, market and distribute our extensive range of water disinfection products.

Our product range caters for communal pools, private pools and the growing spa market. We also manufacture a range of products for those applications which require chlorine-free treatments.

Our UK operation based at Castleford, West Yorkshire is supported with a team of sales managers and customer support services.

Contact us for any enquiries, orders or product information.

Lonza Water Treatment is part of the Specialty Ingredients sector of Lonza.

We provide solutions for healthy homes and workplaces. We offer antimicrobial products in the areas of consumer care, wood treatment, water treatments, agro solutions, and industrial applications.

Lonza is headquartered in Basel, Switzerland and is listed on the SIX Swiss Exchange.

For more information visit: www.lonza.com

Steven Gallagher Senior Sales Manager - Northern Europe, UK & Eire

Tel : +44 (0)7787 124296 Email: steven.gallagher@lonza.com

David Parry Tn.ISPE (Cert) Area Sales Manager - UK & Eire

Tel : + 44 (0)7843 207513 Email: david.parry@lonza.com

Joy Allington Customer Support Services

Tel : +44 (0) 1977 714183 Email: joy.allington@lonza.com

Katrina Baker Customer Support Services

Tel : +44 (0) 1977 714147 Email: katrina.baker@lonza.com

Lonza Water Treatment also supply a range of products for residential applications - see page 14 for more details.



Aqua Integral
Agua para el futuro



Our distributor network

We supply the range of **hth®** products through our trusted network of distributors - **Brenntag** and **Univar** - with depots across the UK and Ireland.



BRENNTAG

Brenntag UK & Ireland, ●

Alpha House Lawnswood Business Park Leeds LS16 6QY

Tel: +44(0)113 3879332

Depots in

BELFAST, BRADFORD, BRISTOL, GLASGOW,
LEEDS, LONDON, LUTTERWORTH, MANCHESTER,
NEWCASTLE, NORWICH, POOLE, SWANSEA.

Univar ●

General Sales Enquiries

Tel +44 845 602 6092

Fax +44 845 602 7234

Cardiff Sales - South Sales Office

Western Industrial Estate, Lon-y-Llyn, Caerphilly, Wales.

Tel: +44 2920 855300

cardiffsales@univareurope.com

Widnes Sales - Northern Sales Office

Pickerings Road, Hale Road Industrial Estate,
Ditton, Widnes, Cheshire.

NE Sales: 0151 4226240 NW Sales: 0151 4226245

midland.sales@univareurope.com

Depots in:

BRADFORD, BELFAST, NUNEATON, CUMBERNAULD,
GLASGOW, LACHINE, WESTON, COUPAR ANGUS,
LONDON, MIDDLESBROUGH, RICHMOND,
PONTEFRAC



Technical Support

Our customer support service can give advice on all aspects of pool water treatment and management from personnel who are water treatment specialists.



Behind an outstanding product is an outstanding back up team. Our Technical Services Team offer customers a complete trouble shooting and advice service - absolutely free of charge. Personnel are water treatment specialists and former pool managers with considerable experience of both **hth**® and pool water management.

- FREE Dedicated technical advice by phone, email or a personal visit
- FREE site surveys and plant room audits
- Certificated product training including safety, storage and handling of pool chemicals, water testing and plant room operation
- CIMSPA registered trainers covering site specific courses on pool water management
- How to operate your pool to the industry best practice guidelines and how to implement PWTAG and European standards.



Aqua Integre

Agua para el futuro



Promotional Support

We can provide a variety of marketing literature to suit your needs and our website is crammed full of information and handy tools, including a specific distributor area



Water Treatments for Residential Pools and Spas



Sanitisers



Superfast



Water Balancing



Prevention or Cure



Small Above Ground Pools



Promotional Items



Spa Products

Fi-Clor offers a comprehensive range of trusted, high quality pool care products for residential swimming pools and spas available through a UK approved dealer network. With over thirty years of pool industry experience, we have an excellent reputation for quality products, attention to detail and customer service.

Each **Fi-Clor** Pool Care Product has been developed as a specific stage in the care of the pool - disinfection of the water (sanitising), removal of impurities (shock treatment), water balancing and specific prevention or cure treatments.

By using the appropriate **Fi-Clor** Pool Care Product you are ensuring pool water is clear, blue and free from potentially harmful organisms throughout the season.

As the spa market continues to grow very quickly, **Fi-Clor** offers a dedicated range of products for the treatment and maintenance of the spa.

Our dedicated **Fi-Clor** website offers up to date product information, handy tips and useful tools including a pool calculator, distributor search function, troubleshooting guides and informative videos.

Aqua Integrator

Agua para el futuro

Ask us for a copy of our latest product brochure, or visit our website.



Commercial

The hth logo is in red, lowercase letters with a white outline, set against a blue circular background that resembles a water splash. The entire advertisement features a background image of a swimming pool with lane lines and a large, stylized blue 'L' graphic overlaid on it.

hth

Professional Pool Treatment

Aqua Integral[®]

Aqua para el futuro

Arch Chemicals Ltd, a Lonza company.

Wheldon Road, Castleford,
West Yorkshire, WF10 2JT
United Kingdom
Tel: 01977 714100
Email: watersales@lonza.com
www.lonza.com

www.hth.co.uk

Lonza

Use biocides safely. Always read the label and product information before use. All trademarks belong to Lonza or its affiliates or to their respective third party owners. All product information corresponds to Lonza's knowledge on the subject at the date of publication, but Lonza makes no warranty as to its accuracy or completeness and Lonza assumes no obligation to update it. Some products may not be available in all markets or for every type of application. Product and safety information is intended for use by recipients experienced and knowledgeable in the field, who are capable of and responsible for independently determining the suitability of ingredients for intended uses and to ensure their compliance with applicable law. Proper use of this information is the sole responsibility of the recipient. Information provided by Lonza is not intended and should not be construed as a license to operate under or a recommendation to infringe any patent or other intellectual property right.

© 2018 Lonza